






Part Number	G1306 -- GRCOW246-103PH6PS6-D-IP44 Power Monitoring, Outlet Level
Power Configuration	32A, 230V, 7.3kW
Physical Configuration	72 in / 1829 mm Vertical



Description	<p>G1306 -- GRCOW246-103PH6PS6-D-IP44 provides site managers with a comprehensive view of outlet level power usage in a data center. On-board and web power monitoring display options offer quick access to each outlet's current, volts, real power, apparent power, power factor and kilowatt hours. By monitoring these critical variables, data center managers can evaluate energy usage trends and ensure maximum uptime. The unit's two environmental sensor ports also give data center managers the ability to track critical climate variables like temperature, air flow, humidity and dew point.</p> <p>Racknet Enabled – The G1306 -- GRCOW246-103PH6PS6-D-IP44 easily integrates with Racknet – Geist's DCiM software. Racknet (purchased separately) collects and reports critical power and environmental data for multiple PDUs in one, user configurable interface. Users gain immediate remote access to trends, alarms and histories of devices in the data center through a standard Web browser. Racknet saves both time and cost associated with managing each device individually. Contact your Geist rep for more details.</p>
Product Summary	<p>G1306 -- GRCOW246-103PH6PS6-D-IP44 QUETZAL - Power Monitoring, Outlet Level, + Environmental Monitoring -- 32A, 230V, Vertical, (18) Locking IEC C13,(6) Locking IEC C19, breakered, 3 m power cord with 2P+E, Power – Local/Remote + Environmental Ports, , Aggregate - Total Unit Monitoring (A, V, VA, W, kWh, PF), Circuit / Breaker Monitoring (A, V, W, VA, kWh, PF), Outlet Monitoring (A, V, W, kWh) - Outlet Power Measurements Compliant with ANSI C12.1 and IEC 62053-21 1% Accuracy Class Requirements.</p>
Monitoring	Power – Local/Remote + Environmental Ports
Plug Form	 2P+E
Receptacle	 Locking IEC C13 (Quantity: 18)  Locking IEC C19 (Quantity: 6)



G1306 -- GRCOW246-103PH6PS6-D-IP44 - Product Specification and Options

Monitoring	Power – Local/Remote + Environmental Ports
Monitoring Level 1	Aggregate - Total Unit Monitoring (A, V, VA, W, kWh, PF)
Monitoring Level 2	Circuit / Breaker Monitoring (A, V, W, VA, kWh, PF)
Monitoring Level 3	Outlet Monitoring (A, V, W, kWh) - Outlet Power Measurements Compliant with ANSI C12.1 and IEC 62053-21 1% Accuracy Class Requirements.
Quantity Of Inputs	1
Voltage	230V
Current	32A
VA per Input (Load Capacity)	7.3kW
Frequency	50/60 Hz
Over Current Protection	(2) 16A Single Pole Magnetic Breakers
Switch	Breaker/Switch Combination
Activity LED	1
Idle LED	1
Power LED	1
Scrolling Digital Display	Yes
Power Cable Wire Gauge	4mm ² H07RN-F
Power Cable Length	3m
Plug Type	IEC60309 2P + E, 32A, 250V, Splashproof IP44
Combined Total Receptacle/Socket Quantity	24
Receptacle/Socket Type #1	Locking IEC C13
Quantity on Face #1	18
Quantity per Breaker #1	9
Style #1	Individual
Maximum Output per Receptacle/Socket #1	10A
Voltage per Receptacle/Socket #1	230V
Receptacle/Socket Type #2	Locking IEC C19
Quantity on Face #2	6
Quantity per Breaker #2	3
Style #2	Individual
Maximum Output per Receptacle/Socket #2	16A
Voltage per Receptacle/Socket #2	230V
Internal RMS Voltage Sensor	Yes
Internal RMS Current Sensor	Yes
Network Connection	Ethernet via RJ45
Network Protocols Supported and Data Access Formats	ARP, IPv4, IPv6, ICMP, ICMPv6, NDP, TCP, UDP, DNS, HTTP, HTTPS, SMTP, SMTPS, DHCP, SNMP (v1/v2c/v3), Syslog, SSH, Serial, LDAP, JSON API, Web GUI, CLI, JSON datalog, CSV datalog
Reboot Button	Yes
Serial Connection	RS232 via RJ45
Remote Sensor RJ Connection Jacks	2
RSD - Optional Remote Display Jack	Yes
Heavy Steel -Black Powder Coat	Yes
Configuration	72in / 1832mm Vertical Rackmount
7938 Vertical Mounting Bracket Kit	Yes
Toolless Mounting Hardware - Center to Center Spacing	1556 mm and 1645 mm

Product Warranty	Three Year
Certification/Agency Approvals	CE Marked
Certification/Agency Approvals	China RoHS
Certification/Agency Approvals	Complies with EN 55022 and EN 55024
Certification/Agency Approvals	Complies with IEC 60950-1 (CB Certificate Available)
Certification/Agency Approvals	RoHS Compliant
Chassis Dimensions (LxWxD)	1829mm x 58mm x 58mm
Doghouse (D)	37mm
Shipped Weight	22lbs (9.98kg)

Managing Multiple Geist PDUs?

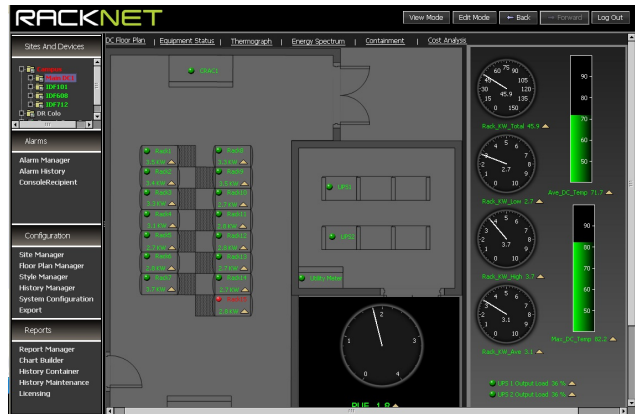
Customers who purchase G1306 -- GRCOW246-103PH6PS6-D-IP44 select Geist's Racknet-Aggregator solution to proactively manage their Geist PDUs and environmental solutions.

Racknet-A

Geist's PDU management solution, Racknet-A gives visibility to data collected by Geist power strips in one centralized location. Now you can manage power data at the rack level.

With Racknet-A you can:

- Consolidate the management of all Geist hardware into one, intuitive interface.
- Save space and associated costs on expensive network switches.
- Manage hundreds of devices or thousands of points through *GNET.
- Collect and store data to examine trends and create reports.
- Set alarm notifications in one centralized location.
- Trend data and run reports on recorded points.

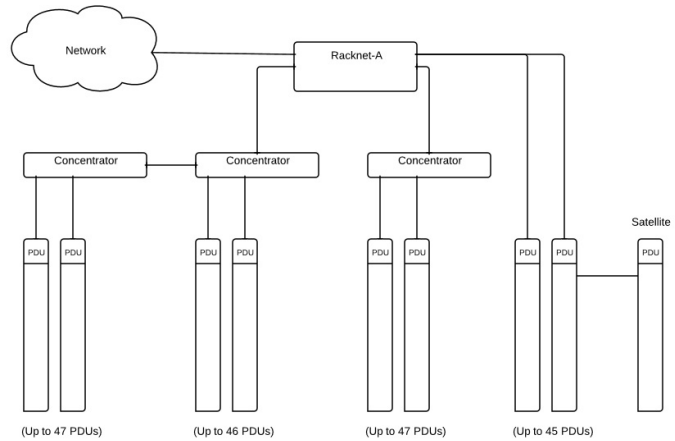


Auto Discover Geist PDUs with Racknet

Complete your PDU purchase with the perfect centralized management tool.

*What is GNET?

GNET is the advanced network that brings various Geist devices together—using only one IP address.



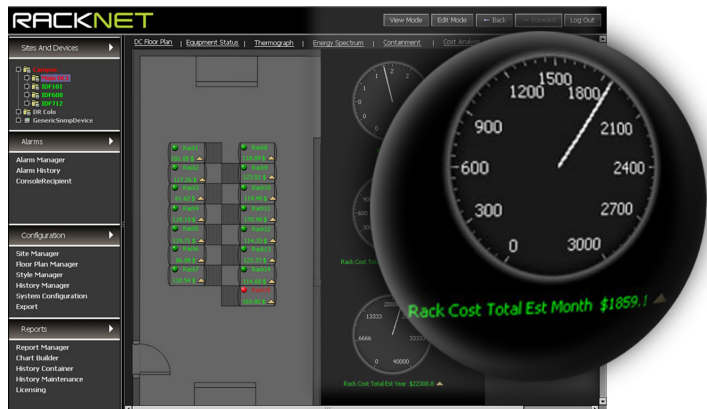
Racknet Connection Diagram

Need to manage third-party equipment?

Try our vendor neutral Racknet products.

Both Racknet-S and Racknet-AS come with an expanded feature set that provide even more flexibility, reach, and control of your white space equipment. Each of these solutions support third-party devices and comes with full customization capabilities. Additional management tools help create meaningful data calculations and display key information in real-time.

For more information on Geist's Racknet solutions visit: <http://www.geistglobal.com/products/manage>



Customers who purchase G1306 -- GRCOW246-103PH6PS6-D-IP44 select integrated sensors to better monitor the environmental elements in their data center. These sensors connect directly to the Geist PDU and send data to Racknet or any web-enabled computer.

Integrated Sensors – Capture data on a broad range of environmental factors with Geist’s complete line of digital and analog sensors. Sensors connect directly to Geist’s intelligent PDUs and measure the following:

- Temperature, humidity, dewpoint and airflow
- Leak detection and water sensing
- Smoke
- Carbon monoxide
- Door position
- And more...

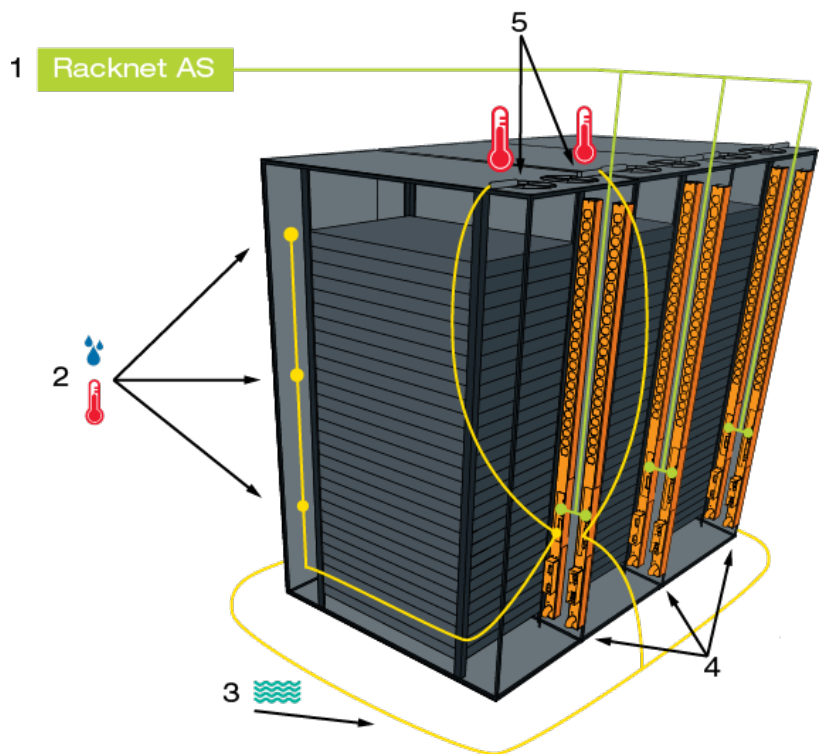
Visit <http://www.geistglobal.com/products/monitor> for all available sensor options.

GT3HD Digital Temp, Humidity and Dewpoint Sensor – Daisy chain multiple sensors to measure the environmental factors throughout the cabinet.

Leak Detection Cable – Identify the presence of water over a large area to keep sensitive equipment protected from water damage.

Application Diagram

1. Racknet AS – Collects data from specified equipment then stores, aggregates, reports, and displays the data on a secure internet connection for multiple user remote access. Captures data from up to 48 unique ethernet connections under a single IP address.
2. Temperature/Humidity/Dewpoint Sensors (GTHD) – Measure critical environmental elements and send data through intelligent PDU ports. The GTHD sensors shown can daisy chain similar units to create a sensor network.
3. Water Sensing Unit – Detects presence of water and reports information to the intelligent PDU.
4. Geist PDUs – Supplies power to critical data center equipment. In addition, the intelligent PDU sends performance metrics as well as data captured from environmental sensors to Racknet for collection.
5. Temperature and Airflow Sensors – Measure specific temperature and airflow at critical locations around the cabinet then sends data through intelligent PDU ports.



Geist Americas

1821 Yolande Ave
Lincoln, NE 68521 USA
1.800.432.3219 or
1.402.474.3400
www.geistglobal.com

Geist Europe

Unit 1, The Monarch Centre,
Venture Way,
Priorswood, Taunton,
Somerset, TA2 8DE UK
+44 (0) 1823 275100
www.geisteurope.com

Geist Asia

China
Tiley Plaza Bldg. A, Unit #2910,
No. 199 Haide 3 Road,
Nanshan Shenzhen,
Guangdong Province, China.
Postal Code: 518000
Tel: +86.755.86639505
www.geistglobal.com

Geist Asia

Hong Kong
Tel: +852 81764860
Email: salesasia@geistglobal.com